



# American Ultraviolet®

Insightful Solutions. Remarkable Results. Since 1960.

## Direct UVC Germicidal Fixtures

Shortwave ultraviolet energy (UV-C) has been used for decades to disinfect the air and surfaces in hospital patient rooms, ORs, critical care areas, office spaces, and classrooms, as well as for direct food irradiation, and packaging lines. American Ultraviolet manufactures the most complete line of products to fit all of these, and other environments.

The EPA, CDC, WHO, and FDA recognize UV-C as a safe and effective step for the disinfection of air, surfaces, and food products. Using UV-C for disinfection of air and surfaces leaves no residual chemistry behind, creates no by-products, doesn't affect the taste or appearance of foods, and requires very little maintenance.

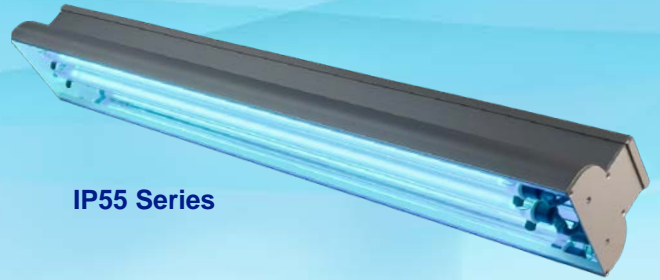
American Ultraviolet has been the leading manufacturer of germicidal UVC fixtures since 1960 and we continue to lead the way with our full "Made in the USA" product lines.

Benefits of American Ultraviolet germicidal direct fixtures:

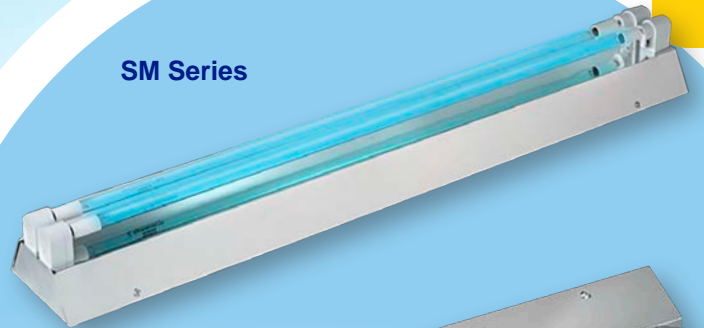
- No residual chemistry or by-products
- Low initial and on-going maintenance costs
- Quick turnover and short cycle times
- Can be integrated into existing production lines and environments
- Effective against all DNA / RNA based microorganisms



RT Series



IP55 Series



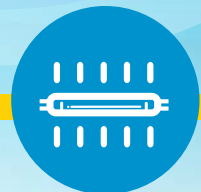
SM Series



GRK Series

## DIRECT UVC Germicidal Fixtures

UVC Germicidal Solutions

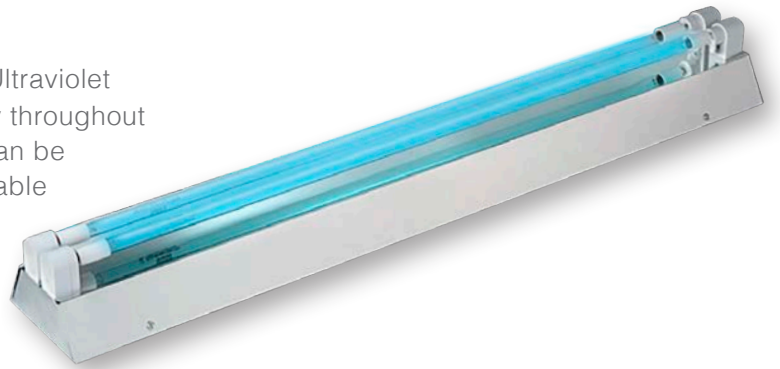




# DIRECT UVC Fixtures

## Surface Mount (SM) Series

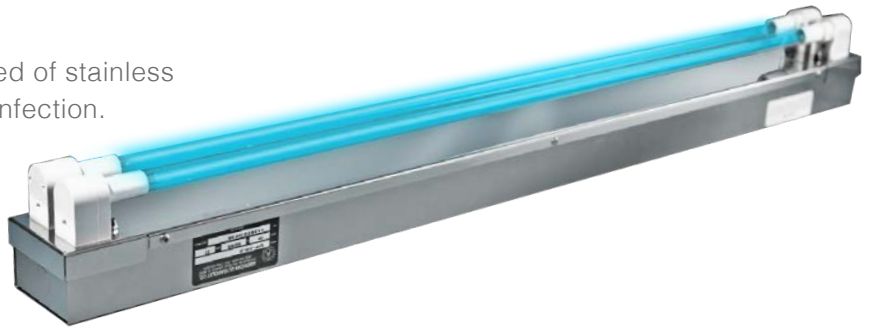
SM Series germicidal fixtures from American Ultraviolet are designed to evenly distribute UV-C energy throughout rooms and surfaces. Because these fixtures can be mounted onto ceilings, or walls, they are available for numerous applications. The SM Series fixtures are available in 18" and 36" lengths, with one or two UV-C lamps, and with an optional shatterproof coating. The fixtures operate at 120-277V 50/60HZ.



Surface Mount (SM) Series Offerings						
Model Number	Coverage Area	Electrical	Dimensions (WxHxD)	Weight	Replacement Lamp	Replacement Ballast
<b>SM-18</b>	22 sq/ft	110-277v 50/60 Hz 0.3-0.12 amps	18" x 5" x 4"	2.5 lbs	GML-060	TXG-010B
<b>SM-36</b>	49 sq/ft	110-277v 50/60 Hz 0.5-0.2 amps	37" x 5" x 4"	3.5 lbs	GML-005	TXG-010B
<b>SM-36-2</b>	74 sq/ft	110-277v 50/60 Hz 1.0-0.4 amps	37" x 5" x 4"	4.75 lbs	(2) GML-005	TXG-015B

## Utility Fixtures (UF) Series

UF Series germicidal fixtures are constructed of stainless steel, and designed for air and surface disinfection. UF Series fixtures are available in 18" and 36" lengths, with one or two lamp options. The UF Series can be mounted to walls and ceilings, inside chambers and equipment, or under cabinets. Standard electrical operation is 120-277V 50/60Hz.



Utility Fixture (UF) Series Offerings						
Model Number	Coverage Area	Electrical	Dimensions (WxHxD)	Weight	Replacement Lamp	Replacement Ballast
<b>UF-18</b>	22 sq/ft	110-277v 50/60 Hz 0.3-0.12 amps	18" x 4" x 3.16"	2.5 lbs	GSL-18-SO	TXG010 B
<b>UF-18-2</b>	35 sq/ft	110-277v 50/60 Hz 0.6-0.24 amps	18" x 4" x 3.16"	2.75 lbs	(2) GSL-18-SO	TXG015 B
<b>UF-36</b>	49 sq/ft	110-277v 50/60 Hz 0.5-0.2 amps	36" x 4" x 3.16"	3.5 lbs	GSL-36-SO	TXG-010 B
<b>UF-36-2</b>	74 sq/ft	110-277v 50/60 Hz 1.0-0.4 amps	36" x 4" x 3.16"	4.75 lbs	(2) GSL-36-SO	TXG015 B

# DIRECT UVC Fixtures

## Guard Rail “Kits” (GRK) Series

The GRK Series can be added to any SM or UF Series fixture. The kit helps to protect UV-C lamps from accidental breakage while minimizing energy blockage. Each kit consists of (4) 3/16” aluminum rods, (3) mounting brackets, and, when added to the fixture, will include shatter proof UV-C lamps. The GRK Series is available with single and double lamp fixtures, in 18” or 36” lengths.



**Guard Rail Kits (GRK) Series Offerings**

Model Number	Description
<b>GRK-181</b>	18” Guard Rail kit single lamp
<b>GRK-182</b>	18” Guard Rail kit double lamp
<b>GRK-361</b>	36” Guard Rail kit single lamp
<b>GRK-362</b>	36” Guard Rail kit double lamp



## Recessed Troffer (RT) Series

RT Series fixtures are available with two or four high-intensity germicidal ultraviolet lamps. The fixtures come standard with motion detection that turns the UV-C lamps off if motion is detected. There is also an option to use UV-C and LED visible lights in one fixture with selective switching, without the need for separate fixtures. The RT Series is constructed of a steel recessed frame with a hinged door that incorporates the optical egg-crate louver. The fixtures are available with a 2’ x 4’ or 1’ x 4’ frame for a drop in grid ceiling; or the RT-D mounting kit can be added for drywall ceiling mounting.

**Recessed Troffer (RT) Series Offerings**

Model Number	Coverage Area	Electrical	Dimensions (WxHxD)	Weight	Replacement Lamp	Replacement Ballast
<b>RT-14-2</b>	35 sq/ft	120-277v 50/60 Hz 1.1-0.5 amps	11.75" x 47.75" x 6.65"	16 lbs	(2) GML-005	TXG-015B
<b>RT-24-2</b>	75 sq/ft	120-277v 50/60 Hz 1.1-0.5 amps	23.75" x 47.75" x 4.75"	32 lbs	(2) GML-005	TXG-015B
<b>RT-24-4</b>	125 sq/ft	120-277v 50/60 Hz 1.9-0.81 amps	23.75" x 47.75" x 4.75"	32 lbs	(4) GML-005	TXG-015B
<b>RT-24-22</b>	75 sq/ft	120-277v 50/60 Hz 1.15-.05 amps	23.75" x 47.75" x 4.75"	32 lbs	(2) GML-005 (2) LED-500	TXG-015B

**RT Series Drywall Mounting Kit**

Model Number	Description
<b>RT-14-D</b>	RT series 1" x 4" drywall mounting kit
<b>RT-24-D</b>	RT series 2" x 4" drywall mounting kit





# DIRECT UVC Fixtures

## Ingress Protection 55 (IP55) Series

IP55 Series germicidal fixtures are designed for wet or washdown environments, including food and beverage manufacturing and bottling plants, bakeries, healthcare applications, and other high moisture environments. The IP Series from American Ultraviolet comes standard as a double lamp 36" fixture with a highly polished reflector, moisture proof lamp connectors, and encapsulated lamps. The extruded aluminum housing keeps the electronics isolated from water and dust exposure. IP Series fixtures operate at 120-277V 50/60HZ.



Ingress Protection (IP55) Series Offerings						
Model Number	Coverage Area	Electrical	Dimensions (WxHxD)	Weight	Replacement Lamp	Replacement Ballast
IP55-2A	75 sq/ft	110-277v 50/60 Hz 1.1-0.5 amps	36.38" x 5" x 3.81"	8 lbs	GTL-36-S0	TXG-015B

## Door Barrier (DB) Series

The DB Series fixtures confine germicidal energy to a narrow beam, providing full coverage across doorways. Wider openings can be equipped with two or more units mounted in tandem above the opening. Beam width and depth are further controlled with deep louvers that create a powerful, concentrated curtain of germicidal UV-C energy, resulting in maximum output and increased effectiveness. Beam width and depth can be enlarged to control lamp/floor/distance ratio, in order to create a balanced germicidal barrier from fixture to floor. Lamp and louvers are easily removable for maintenance and lamp replacement. The DB Series fixtures operate at 120-277V 50/60HZ.



Door Barrier (DB) Series Offerings						
Model Number	Coverage Area	Electrical	Dimensions (WxHxD)	Weight	Replacement Lamp	Replacement Ballast
DB-36	3 sq/ft	110-277v 50/60 Hz 1.1-0.5 amps	36" x 7" x 4"	8 lbs	GML-005	TXG-010B



**American Ultraviolet®**

Insightful Solutions. Remarkable Results. Since 1960.

Corporate HQ, Lebanon, IN • Torrance, CA • Hackettstown, NJ  
765.483.9514

[americanultraviolet.com](http://americanultraviolet.com)

